

HEARNU[®]

BTE PRIME

Digital Programmable
Hearing Aid with Bluetooth Connectivity



Useful for individuals with
Mild to Profound SN hearing loss upto 125dB

AMAZING FEATURES



32 Channels Programmable

Advance programming tool with audiogram auto tuning feature



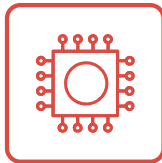
Rechargeable Battery

High-tech charging case with 8 times charging capacity and UV Sterilization



Wireless Connectivity

Bluetooth 5.1 connectivity with mobile, laptop, and TV



Next-Generation Processor

High-end audio processing for noise reduction and clear sound



Mobile App Customization




Mobile App for user to switch between different modes and customize audio



Futuristic Design

9 grams lightweight design with IPX7 water resistance

COMPARISON

Non-Surgical Devices	 HearNU BTE Prime	 Widex	 Signia
Channels	8-32 Channels	8-24 Channels	8-12 Channels
Fitting Range	125 dB SPL, Up to Profound HL	110 dB SPL, Up to Profound HL	120 dB SPL, Up to Severe HL
Battery	Rechargeable Battery, 45 minutes charge, 8 Hours Playtime	Coin cells, need to replace them every week	Coin cells, need to replace them every week
Programming	Remote programming without need of any additional hardware	Through software using High-Pro and Noah Link	Through software using High-Pro devices
Mobile App	Customizations in audio profiles with mobile application	No	No
Connectivity	Bluetooth 5.1 dual connectivity with iOS and Android	Bluetooth connectivity with iOS and Android	Bluetooth Connectivity with iOS only

*Comparison with products in same price range



3 YEARS BRAND WARRANTY
For manufacturing defects

PRODUCT OF WEHEAR INNOVATIONS PVT. LTD.